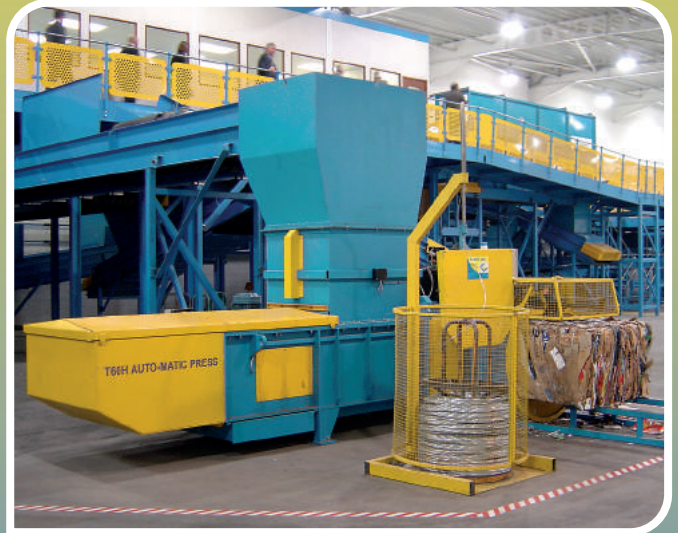


# KME

## Ken Mills Engineering Ltd



### Fully Automatic Twin Ram Balers



BRITISH  
MADE

# The Aries Baler Range

## British Manufactured Fully Automatic Twin Ram Baler

### Main Features

- 70 to 115 tonnes of main press ram force
- Hardox Lined press and eject chambers for long life
- Colour touch screen controls
- Fully automatic wire/strap tying systems
- Retaining clappers increasing hopper fill for loose fill products
- 10-30 bales per hour dependant on model and materials
- Can be designed and built to suit own specifications



# Typical Bales Produced

Two Bale lengths - 1200mm or 1500mm



620kg bale of shredded paper



500kg bales of cardboard



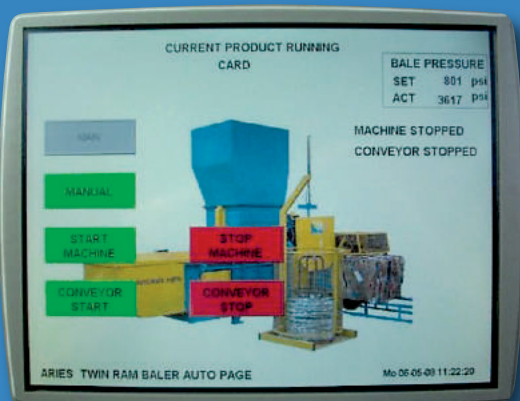
400kg bales of plastic bottles



Bale loading

## Full Colour Controls

The Ariès model machines are controlled via a large colour touch screen for operating the machine and making adjustments where required. The functions of the machine and adjustments can be made easily which typically include the following:



- No. of wires/straps per bale
- Position of wires/straps
- Main ram pressure
- Auto/manual operation
- Start/stop feed conveyor
- Bale counter

# Twin Ram Baler Specifications

We can offer a number of options with the Twin Ram Baling Unit with regards capacity, hopper size, bale size etc. Below is a simple chart showing the main differences with detailed description below.

Model Reference	ARIES70-22	ARIES70-30	ARIES115-44	ARIES115-60
Main ram pressure	70 Tonnes	70 Tonnes	115 Tonnes	115 Tonnes
Hopper opening	1200/1500 x 950	1500/1800 x 950	1500/1800 x 950	1500/1800 x 950
Main drive motor	22kw	30kw	44kw (2x22kw)	60kw (2x30kw)
Wire tie motor	7.5kw	7.5kw	7.5kw	7.5kw
Main ram cycle (no material)	18 seconds	18 seconds	19 seconds	15 seconds
Bale size approx.	1150 x 780 x 1200	1150 x 780 x 1200 (1500*)	1150 x 780 x 1200 (1500*)	1150 x 780 x 1200 (1500*)
Production rate max.	10 bales / hour	13 bales / hour	15 bales / hour	20 bales / hour

\*With an XL model the bale would be approx. 300mm larger than the standard machine.

**NOTE:** The main motor capacity, hopper size, ram force and bale size can be changed to suit customers exact requirements and costed accordingly. The above specifications are the most popular models we manufacture.

## Conveyors



We design and manufacture the infeed conveyor to suit customers requirement and machinery layout.

# KME

## Ken Mills Engineering Ltd

Unit 9 | Greenvale Business Park | Todmorden Road | Littleborough | Lancs | OL15 9FG | England  
Telephone: +44 (0)1706 756500 | Fax: +44 (0)1706 374699 | Email: andym@kenmills.co.uk  
[www.kenmills.co.uk](http://www.kenmills.co.uk)